



260 St. Vincents Road, Dartford, DA1 1UX  
**£2,100 Per month**



260 St. Vincents Road, Dartford, DA1 1UX

**£2,100 Per month**

Nestled on the charming St. Vincents Road in Dartford, this delightful mid-terrace 3 bedroom house offers a perfect blend of character and modern living. Built in 1890, the property boasts a generous living space making it an ideal home for families or those seeking extra room to breathe.

Upon entering, you are greeted by two inviting reception rooms, perfect for entertaining guests or enjoying quiet evenings with family. The layout provides a warm and welcoming atmosphere, with ample natural light flowing through the windows. The three well-proportioned bedrooms offer comfortable retreats, ensuring everyone has their own space to unwind.

Situated in Dartford, this home benefits from excellent transport links and local amenities, making it a practical choice for commuters and families alike. With its charming period features and spacious layout, this property presents a wonderful opportunity to create lasting memories in a lovely neighbourhood. Don't miss the chance to make this house your home.



## Description

Nestled on the charming St. Vincents Road in Dartford, this delightful mid-terrace 3 bedroom house offers a perfect blend of character and modern living. Built in 1890, the property boasts a generous living space making it an ideal home for families or those seeking extra room to breathe.

Upon entering, you are greeted by two inviting reception rooms, perfect for entertaining guests or enjoying quiet evenings with family. The layout provides a warm and welcoming atmosphere, with ample natural light flowing through the windows. The three well-proportioned bedrooms offer comfortable retreats, ensuring everyone has their own space to unwind.

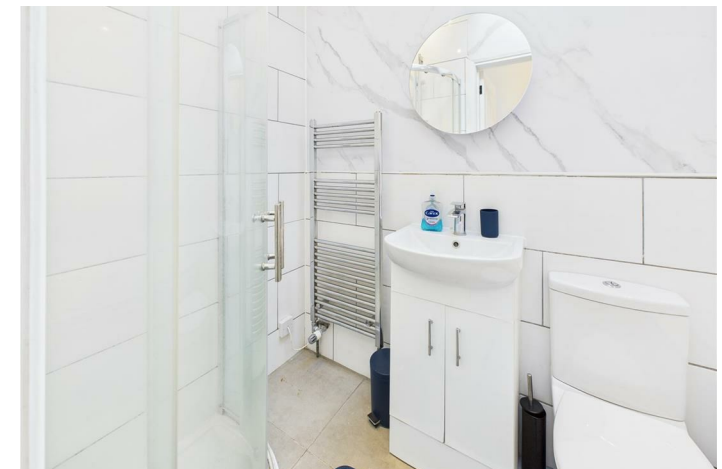
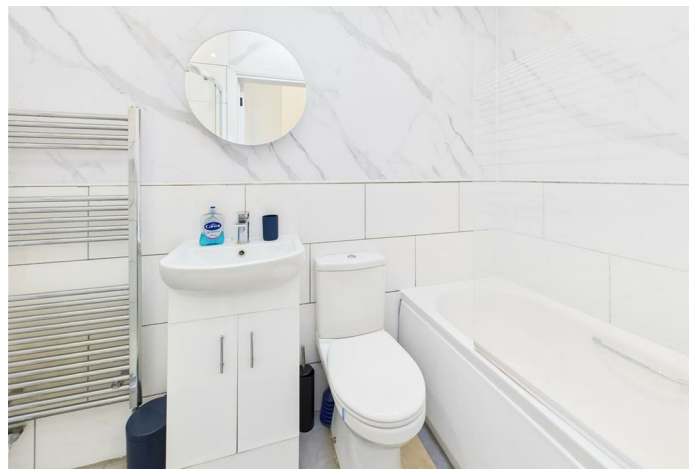
## Situation

Situated in Dartford, this home benefits from excellent transport links and local amenities, making it a practical choice for commuters and families alike. With its charming period features and spacious layout, this property presents a wonderful opportunity to create lasting memories in a lovely neighbourhood. Don't miss the chance to make this house your home.

Furnished

Council Tax Band: C

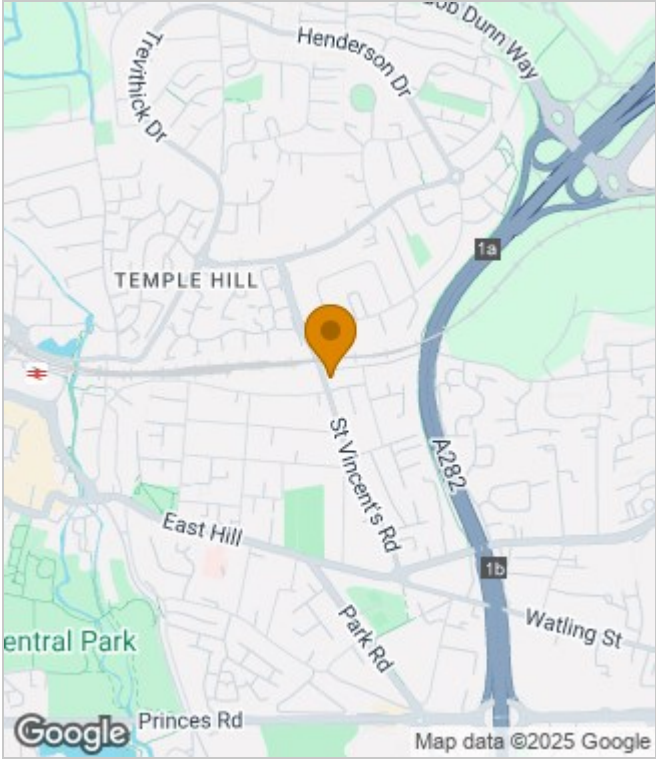
Available: 10th November 2025



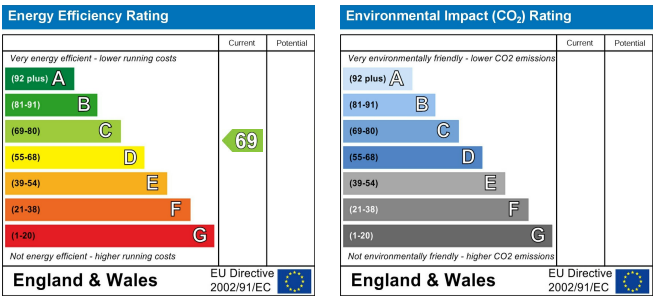
Floor Plans



Area Map



Energy Performance Graph



These particulars, whilst believed to be accurate are set out as a general outline only for guidance and do not constitute any part of an offer or contract. Intending purchasers should not rely on them as statements of representation of fact, but must satisfy themselves by inspection or otherwise as to their accuracy. No person in this firms employment has the authority to make or give any representation or warranty in respect of the property.